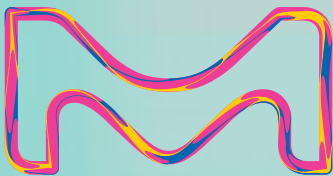


MERCK

CONTROL YOUR BIOMARKER QUEST

Gain your desired immunoassay sensitivity with the ultrasensitive **FemtoQuest™** system



Start Your Quest at
SigmaAldrich.com/femtoquest

The Life Science business of Merck operates as MilliporeSigma in the U.S. and Canada.

Millipore®

Preparation, Separation,
Filtration & Monitoring Products

REVEAL ELUSIVE BIOMARKERS

When your research requires measuring low-level proteins in valuable samples, you need an instrument you can rely on to provide consistent results every time. Conquer your pursuit for immunoassay sensitivity with the simple-to-use FemtoQuest™ system.

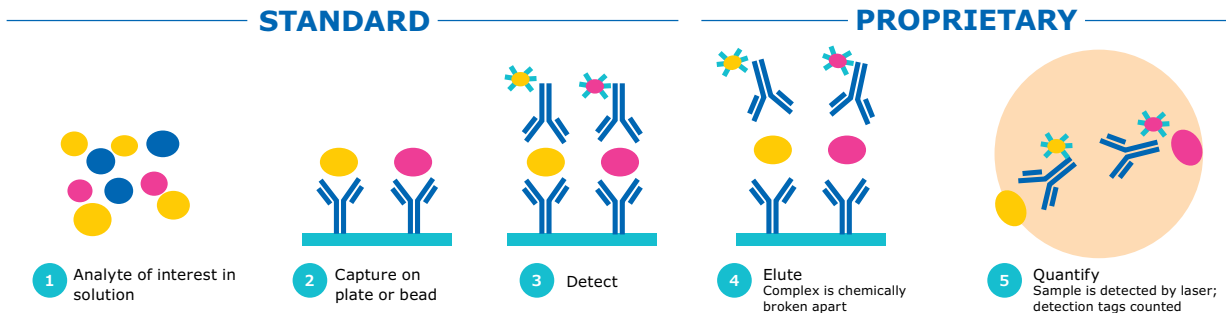


The FemtoQuest™ System Offers:

- High sensitivity with up to 1,000x greater sensitivity than traditional methods (fg/mL)
- Higher-quality dual-plex and single analyte analysis
- A large portfolio of single analyte kits and an expanding portfolio of dual-plex kits
- Automation compatibility
- Compact benchtop solution (14.11" H x 17.5" W x 24" D)
- Low maintenance

How Does SMC® Technology Work?

In addition to improved precision and robust data, this system allows you to measure down to fg/mL levels of biomarkers using advanced SMC® technology. By combining a unique assay elution step and digital counting, SMC® technology achieves improved signal-to-noise ratios over traditional immunoassay technologies.



Sign up now at SigmaAldrich.com/femtoquest and be the first to know about product updates!

For Research Use Only. Not For Use In Diagnostic Procedures.



To place an order or receive technical assistance:
SigmaAldrich.com/support



For local contact information:
SigmaAldrich.com/offices

Merck KGaA
Frankfurter Strasse 250
64293 Darmstadt, Germany
SigmaAldrich.com

© 2025 Merck KGaA, Darmstadt, Germany and/or its affiliates. All Rights Reserved. Merck, the vibrant M, Millipore, and FemtoQuest are trademarks of Merck KGaA, Darmstadt, Germany or its affiliates. All other trademarks are the property of their respective owners. Detailed information on trademarks is available via publicly accessible resources.

MK_FL14446EN Ver. 1.0 62323 04/2025



Distributed by Abacus dx

1800 ABACUS (AUS) 0800 222 170 (NZ) | info@abacusdx.com | www.abacusdx.com

abacus dx